

FLOORFLEX

PRODUCT CATALOG



Access flooring cable tray systems.

The smarter way to build computer rooms & smart office buildings.





Intelligent, patented design, easy cable access and sturdy construction deliver more effective cable management capabilities.

Designed, patented and engineered with innovative features and benefits that provide extremely efficient cable management while significantly reducing your life-cycle costs, the ACT/FloorFlex System is the right choice for every data center, switch room and general office application.

By making full use of standard 2'x 2' grid spacing, the system is so flexible that it can be installed or retro-fitted without conflict with the access flooring structure itself.

Cable trays can be located just inches below the finished floor for easy access – even as close as two inches – so making changes or repairs isn't a back breaking, time consuming job.

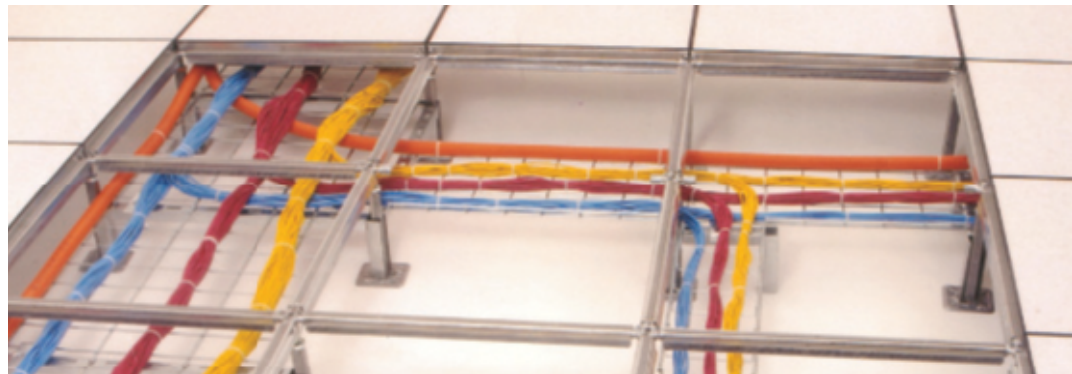
Handy Cable Tray Dividers allows you to nestle large bundles of cables neatly within the divider channels without having to tie wrap them, greatly reducing time spent replacing, moving or adding new cables – and lowering life-cycle costs at the same time.

Because the system is based on 24-inch and 48-inch modules, it has the strength and versatility to be ramped up or down beneath the finished floor surface, by simply adjusting the height of the vertical supports. For multi-level applications, the system can also be installed in a stacked or parallel configuration.

Constructed carefully of solid, high-quality materials, the ACT/ FloorFlex System answers all your cable management needs now – while giving you maximum flexibility and accessibility in the future. That's why we like to say

ACT NOW. SMILE LATER.

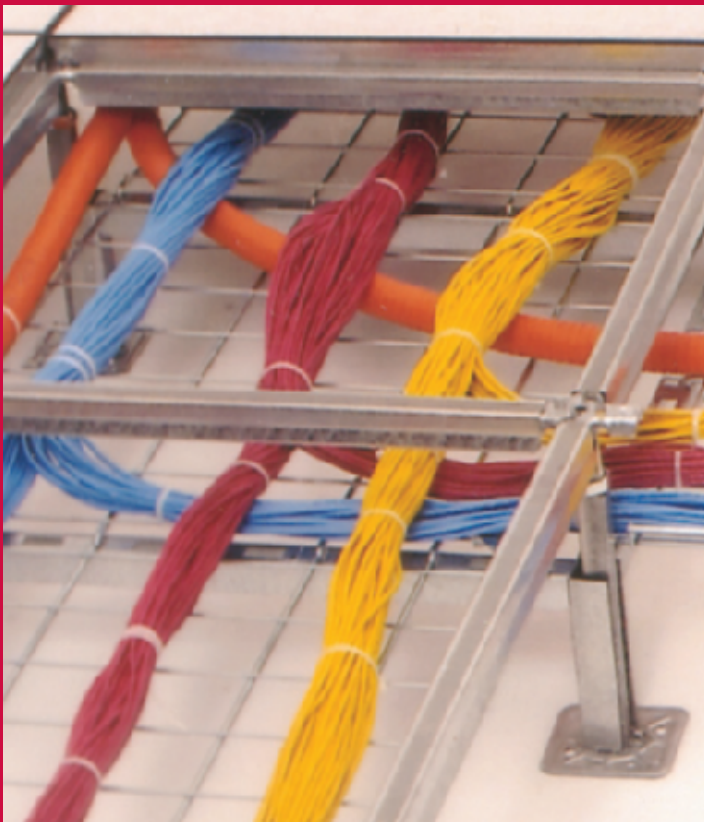
Choose the ACT/FloorFlex system for maximum flexibility & accessibility



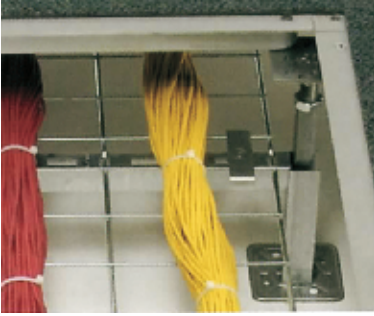
When you specify the ACT/ FloorFlex system, you're on your way to satisfying your cable tray needs.

Choose the one system designed and engineered for easier and more effective cable management in computer rooms, switch rooms and general office environments. Offering maximum flexibility and ease of installation, the ACT System also allows you to re-configure the system layout quickly when your needs evolve and change. It can also be easily retrofitted in any access floor installation. The best overall benefit being the ACT/ FloorFlex system's affordability.

Designed exclusively for access flooring cable tray applications.

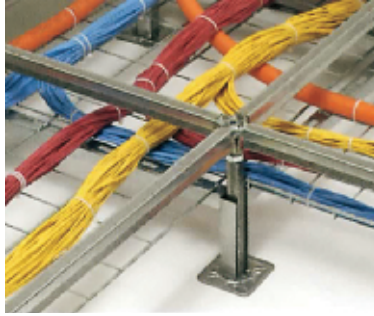


FloorFlex is the product of years of fine tuning and hands on experience in the access flooring industry. In the past, overhead tray systems had to be modified for use in traditional access floor systems, resulting in high material cost, increased labor time and poor system integration. FloorFlex is innovative in it's usage of highly engineered simple to install components that makes our cable tray systems the most effective installation and maintenance solution.



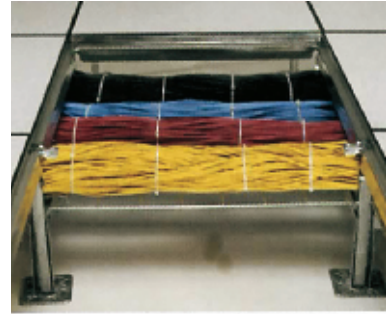
Easy Access

Cable trays can be located as close as two inches from the finished floor surface, providing extremely convenient access to cables.



Open Air Flow

Tray heights are completely adjustable, allowing for clear, unobstructed air flow throughout the plenum.



Heavy Load Capacity

Sturdy construction supports heavy cable loads without any mechanical attachment to access flooring pedestals.

**It's the smarter way to
build computer rooms
& smart buildings.**



Access Flooring System

When you specify the ACT/FloorFlex System now, you'll smile later - Because you've chosen the one system designed and engineered for the easiest and most cost effective cable management in computer rooms, switch rooms and general office environments. Offering maximum flexibility and

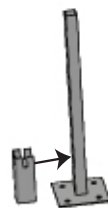
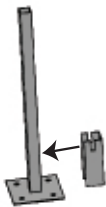
ease of installation, the ACT/FloorFlex System also allows you to re-configure the system layout quickly when your needs evolve and change. It can also be easily retrofitted in any existing access floor installation. And the best feature is - the ACT/FloorFlex System is easiest to install.



FloorFlex is manufactured using 90% recycled steel content. In addition to smart recycling methods ACT has taken considerations to reduce harvest point distance relative to our manufacturing process point.

Here's how simple it is to install. **It's a snap.**

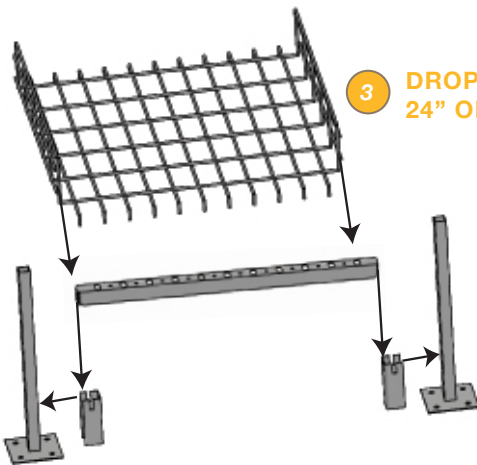
1 SLIP ON VERTICAL SUPPORT



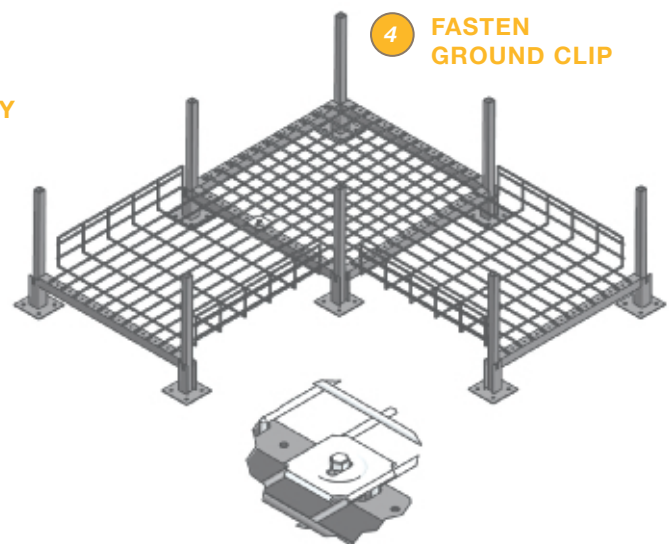
2 SNAP IN HORIZONTAL SUPPORTS



3 DROP IN 24" OR 48" TRAY



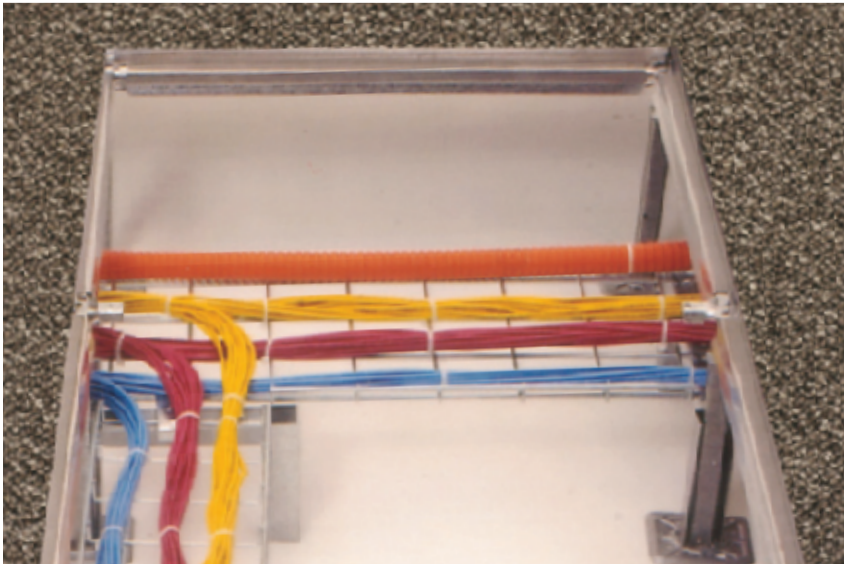
4 FASTEN GROUND CLIP



No special tools or cutting required.

FLOORFLEX

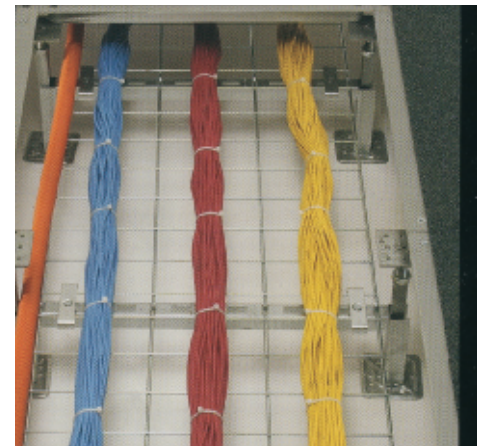
FOR MAXIMUM FLEXIBILITY & ACCESSIBILITY



Delivering maximum accessibility and the flexibility to quickly accommodate changing requirements.

Here's why you're going to smile later

- Brings wiring and cables as close as two inches from the finished floor surface for easy access and management.
- Profile can be as low as 1.25" for general office applications.
- Can be retrofitted in any existing access floor Installation - even under cables already in place.
- Can be easily re-configured to accommodate changing needs.
- Offers extremely cost-effective installation in both new and retrofit applications.
- Allows full use of standard 2' x 2' grid spacing with no conflict with access flooring under structure.
- Supports provide positive grounding to the under structure on one-foot centers.
- Fits all access floor manufacturers' makes and models.
- Carries heavier loads than comparable systems due to extra-sturdy construction that employs 18-gauge horizontal support on 24-inch centers.
- Allows clear, unobstructed air flow in computer room, switch room and general office plenums.
- Keeps cables safely off sub floor to protect them from damage, moisture and debris.
- Vertical support channels surround access flooring pedestal bases for greater stability without affecting pedestal integrity.
- Has no maximum height limits.
- Also available for seismic installations.
- 100% Made in USA. 
- No need to remove and replace understructure stringers and bolts, a significant labor cost savings.



Pre-layout of the system is not required. Guaranteed to be conflict free with any access floor system.

FloorFlex Components

We offer a complete range of products and sizes to match your cabling needs. First, select a tray size. A horizontal fitting flat will accommodate any crosses in your pathway or 90 degree turns in your tray layout. Next, select your horizontal support bar to match the tray width. Finally, select a vertical

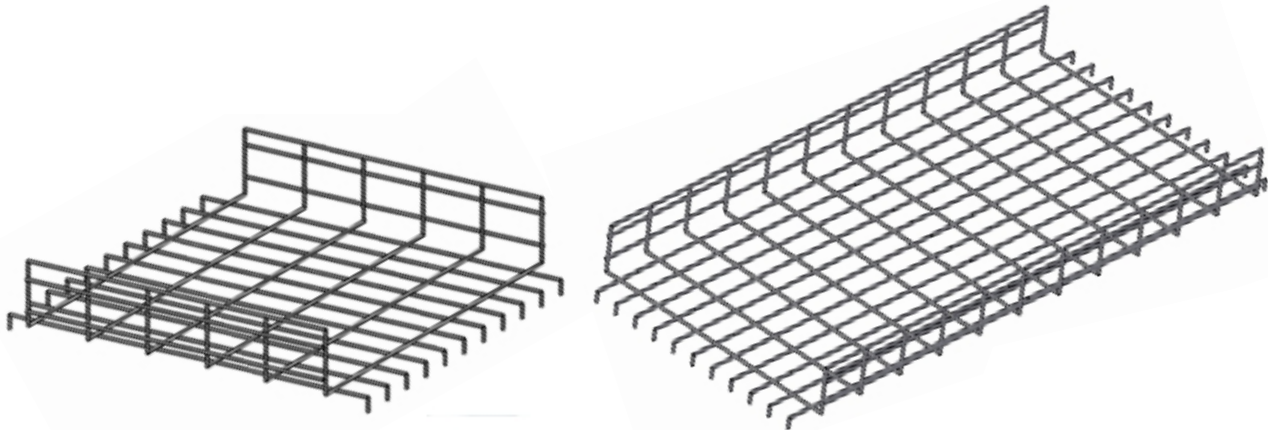
support size to determine the height you want your tray to rise above the slab. There you have it, a custom system. It's that easy.

Should your cabling require a two or three level system, ACT also offers multi-level tray systems.

All components are free of electro-zinc, thus enabling a zinc whisker free environment. This is ideal for sensitive electronic components within your high tech facility.

Floor Trays

Available in 24" and 48" Length Models. Sides 2", 4", and 6" heights. Widths 6", 12", and 24".



Part Numbers

FT2X6X24 - 2" Deep, 6" Wide, 24" Long
FT2X6X48 - 2" Deep, 6" Wide, 48" Long
FT4X6X24 - 4" Deep, 6" Wide, 24" Long
FT4X6X48 - 4" Deep, 6" Wide, 48" Long
FT6X6X24 - 6" Deep, 6" Wide, 24" Long
FT6X6X48 - 6" Deep, 6" Wide, 48" Long

FT2X12X24 - 2" Deep, 12" Wide, 24" Long
FT2X12X48 - 2" Deep, 12" Wide, 48" Long
FT4X12X24 - 4" Deep, 12" Wide, 24" Long
FT4X12X48 - 4" Deep, 12" Wide, 48" Long
FT6X12X24 - 6" Deep, 12" Wide, 24" Long
FT6X12X48 - 6" Deep, 12" Wide, 48" Long

FT2X24X24 - 2" Deep, 24" Wide, 24" Long
FT2X24X48 - 2" Deep, 24" Wide, 48" Long
FT4X24X24 - 4" Deep, 24" Wide, 24" Long
FT4X24X48 - 4" Deep, 24" Wide, 48" Long
FT6X24X24 - 6" Deep, 24" Wide, 24" Long
FT6X24X48 - 6" Deep, 24" Wide, 48" Long

**Special Length, Depth
and Width Trays Are
Also Available.**

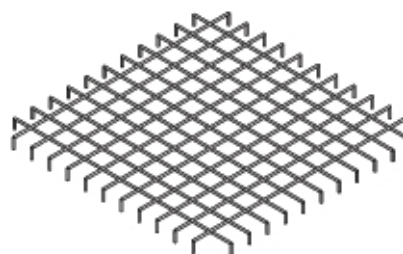
**Custom Finishes
Available Upon Request**

Horizontal Fitting Flat

This Tray allows easy transition through T's, elbows and crosses in your pathway.

Part Numbers

FTINT - 24" x 24" Flat Tray



Horizontal Support Bars

Part Numbers

HS06 - 6" Horizontal Support

HS12 - 12" Horizontal Support

HS24 - 24" Horizontal Support

HS24S - 24" Horizontal Support Seismic



Vertical Supports

Part Numbers

VS02 - 2" Vertical Support

VS03 - 3" Vertical Support

VS04 - 4" Vertical Support

VS08 - 8" Vertical Support

VS10 - 10" Vertical Support

VS12 - 12" Vertical Support

VS14 - 14" Vertical Support

VS16 - 16" Vertical Support

VS18 - 18" Vertical Support

VS20 - 20" Vertical Support

VS24 - 24" Vertical Support

VS30 - 30" Vertical Support

(Special Sizes Also Available)

All Sizes Available to Match Seismic Pedestals - Add prefix S for Seismic

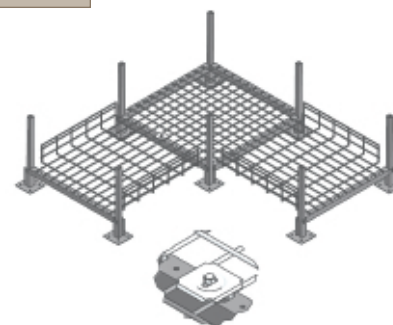
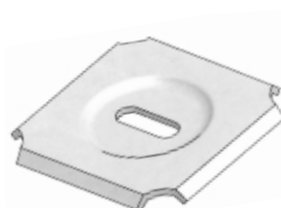


Ground Splice Clip

Use Ground Splice Clip to Fasten Trays and Provide Electrical Continuity.

Part Numbers

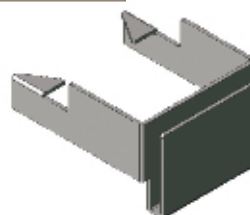
GRDCLIP - Ground Clip/Fastener
(Bags of 50 each)



Vertical Support Retaining Clip

Part Numbers

VSRC - Lock Vertical Support to Access Floor Pedestal
(Bags of 50 each)



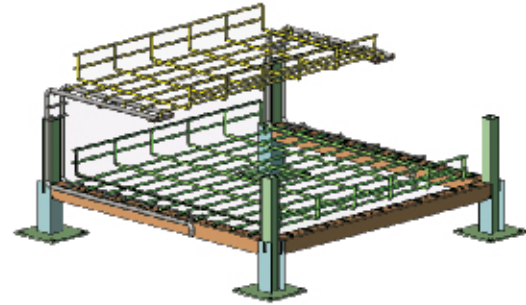
Multi-Level Brackets (2 Level Tray System)

Use brackets to achieve multi-level tray systems.

- Available in heights of 4", 8" and 12".
- Available to accommodate tray widths of 6" and 12".

Part Numbers

ML4X6 - 4" High Multi Level Bracket, 6" Wide Tray
ML8X6 - 8" High Multi Level Bracket, 6" Wide Tray
ML12X6 - 12" High Multi Level Bracket, 6" Wide Tray
ML4X12 - 4" High Multi Level Bracket, 12" Wide Tray
ML8X12 - 8" High Multi Level Bracket, 12" Wide Tray
ML12X12 - 12" High Multi Level Bracket, 12" Wide Tray



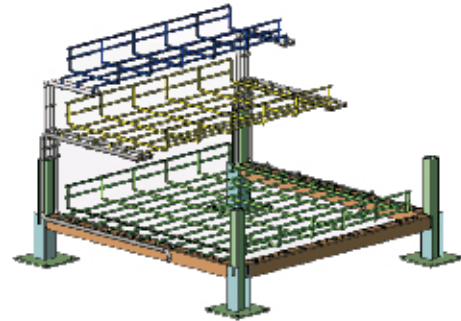
Multi-Level Brackets (3 Level Tray System)

Use brackets to achieve multi-level tray systems.

- Available in heights of 4" to 8".
- Available in widths of 6" and 12".

Part Numbers

MLT4X6 - 4" High Multi Level Bracket, 6" Wide Tray
MLT4X12 - 4" High Multi Level Bracket, 12" Wide Tray
MLT8X6 - 8" High Multi Level Bracket, 6" Wide Tray
MLT8X12 - 8" High Multi Level Bracket, 12" Wide Tray

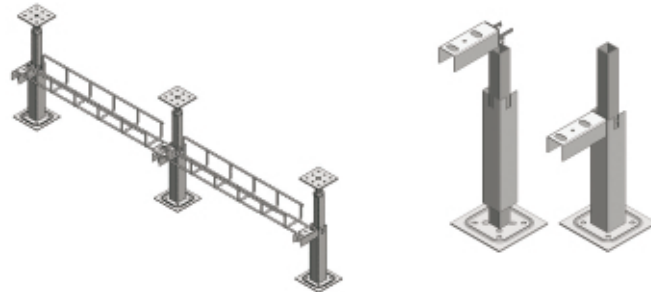


Light Duty "Mini Tray" System

An economical tray system perfect for light duty General Office applications.

Part Numbers

HSMBT – One piece horizontal bar and retaining clip
FT2X2.5X24 –
 2" Deep, 2.5" Wide, 24" Long, General Office Mini Tray
FT2X2.5X48 –
 2" Deep, 2.5" Wide, 48" Long, General Office Mini Tray

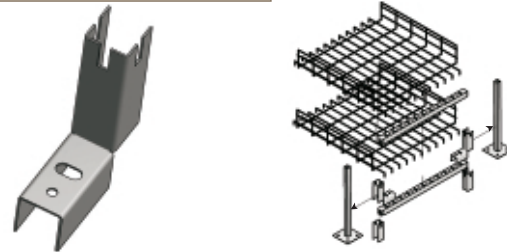


Vertical Extension

Used to make 24" width multi-level tray systems.

Part Numbers

AFVX - 4" High
AFVX - 6" High
AFVX - 8" High



Cable Tray Divider

Used to separate cable bundles within a selected tray width.

Part Numbers

CTD242 - 24" Long, 2" High **CTD282** - 48" Long, 2" High
CTD244 - 24" Long, 4" High **CTD284** - 48" Long, 4" High
CTD246 - 24" Long, 6" High **CTD286** - 48" Long, 6" High





*Act Now.
Smile Later.*

*Here's a sample of FloorFlex patented design product users**

Our product has been supplied and installed throughout North America, Europe, South America and Asia.

Microsoft®



Asset
Management



* Companies noted above are simply users of the FloorFlex patented designed system and are in no way partners or official endorsers of the product.



***When you install the ACT/
FloorFlex Access Flooring
Cable Tray system now,
you'll smile later.***

In general office, data center
or switchroom facilities, FloorFlex
is the ultimate cable management
choice. Allow us to assist you in
achieving maximum flexibility
and productivity in your mission
critical facility.

www.accesscabletrays.com



1073 79th St. South
St. Petersburg, FL 33707

Toll Free 1.866.777.2576 or
727.341.1111
Fax 727.344.8680
www.accesscabletrays.com



100% Made in USA